

At the Recycling District, we get a lot of questions about what is and what isn't recyclable. Here is our latest:



Mail, Paper

Window envelopes and glossy papers are fine.



Newspapers, Magazines

No need to worry about glossy pages or sticker ads.



Cardboard Boxes

Flattened, box tape still on them is fine.



Plastic Bottles

Water and soda bottles are extremely valuable in the recycling stream. Always recycle these!



Aluminum Cans

Soda cans are a valuable recyclable and can be back on the shelf in as little as 60 days.



Food Cans

Tin/Steel cans are a high value item. Rinse food out please!



Paperboard Boxes

Cereal boxes, cracker boxes, pasta boxes, pantry item boxes are all made of highly recyclable paperboard. Empty and trash inner plastic bags.



Glass Bottles/Jars

Unless glass is specifically listed as a non-accepted item, it is acceptable. All colors glass bottles and jars.



Paper recycling:

Paper recycling:

- 1) Make sure your paper is one of the following: Newspaper, magazines, telephone books, mail, printed or copier paper and chipped board (e.g.: cereal boxes).
- 2) Paper should be loose when placed in the bin. No glossy paper or foil wrapping paper. Christmas wrapping paper can be recycled as long as there is no glitter.
- 3) Paper should not be stained by waste.
- 4) **NO SHREDDED PAPER!**



Cardboard Recycling:

- 1) Corrugated Cardboard only.
- 2) Cardboard should be broken down to be placed inside of the recycling bin. Tape does not need to be removed but helps if you do.
- 3) Cardboard should be clean and dry. All materials should be removed from inside the cardboard and thrown away. No styrofoam, bubble wrap, or any other packaging material should remain inside the flattened boxes.
- 4) Pizza boxes with grease on them should be thrown away. They are considered a contaminant.
- 5) Cereal boxes should be placed in the paper bin since they are paperboard.

Metal and Aluminum Cans:

1) All metal and aluminum cans should be clean, dry, and empty.

2) Only metal and aluminum food and beverage cans are accepted. No other metal or aluminum items will be accepted.

3) All metal and aluminum cans should be placed loosely (not in any bag or any other container) in the recycling bin.





Paper recycling:

Glass Bottles and Jars:

1) All glass bottles and jars should be clean, dry, and empty. Unclean material may result in a contaminated load that is placed in the landfill. Rinsing out your glass will keep bees and other critters away.

2) Lids and caps may be kept on the glass bottle or jar. This is not a requirement.

3) Glass may be any color and should be placed loosely in the bin (No bags or containers).

4) No window panes, glassware, mirrors, or lightbulbs may be placed in this bin. These items should be thrown away in your trash.



Plastic Bottles and Jugs:

- 1) Plastic bottles and jugs should be clean, dry, and empty. A quick rinse usually satisfies most containers if addressed right away.
- 2) All plastics should have a “neck and shoulders” to be recycled.
- 3) Do not use plastic numbers (Plastics #1-7) to determine if something is recyclable or not.
- 4) Keep your lids on the plastic bottle or jug.
- 5) Plastic bottles and jugs should be placed loosely

Plastics that are not recyclable...

Plastic shopping bags

Takeout containers, Clear clamshell packaging

Yogurt cups, foam of any kind, Milk cartons, Plastic straws, Cups lids



Twinsburg Township Property

- ♻️ Acquired in 2002
- ♻️ Permitting 2003-2005
- ♻️ Opened 2007
- ♻️ Permit Modification 2009, 2010, 2013



\$10 Million Single Stream Recycling Facility



Twinsburg Recycling Facility opened in June 2012
25 ton per hour “Single Stream”



Loading Material onto Sorting Line from Tipping Floor



Pre-Sort Quality Control Line

Looking to remove:

Large material/material that will harm machine

Bags



OCC Separator, NewSorter Screen & Polishing Screen

OCC Separator- Broken Glass drops down, Cardboard (OCC) Separated
NewSorter Screen- Newspaper (ONP) Separated
Polishing Screen – Mixed Fiber Separated





OCC



ONP

Post Sort Quality Control



Mixed
Fiber

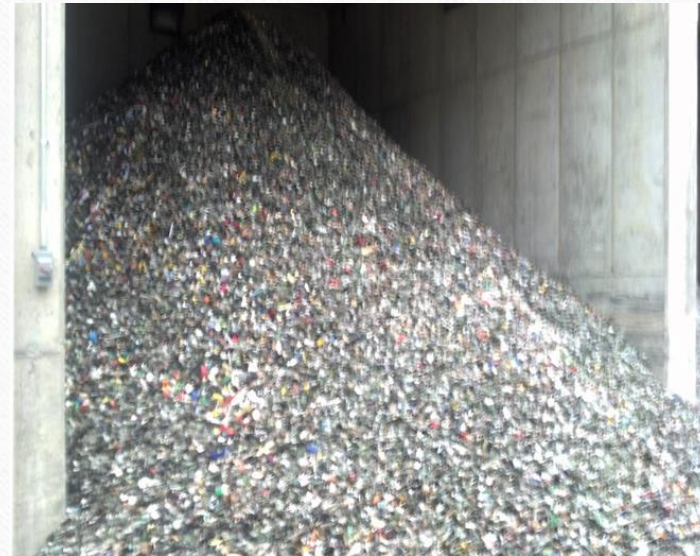


Glass Product Storage Bunkers

Fine Glass Product



Course Glass Product



Magnet

- Bimetal Cans and Containers



Optical Sort



- Infrared sorting system detects and sorts plastics.



Environmental Savings.

- ▶ Old Newspapers – 2,000,000 Tons Recycled
- ▶ Recycling of each ton of paper saves 17 trees and 7,000 gallons of water yearly
- ▶ Every year enough paper is thrown away to make a 12 foot high wall from New York to California
- ▶ Energy savings equivalent to powering 317,000 houses for one year
- ▶ Greenhouse Gas Reduction equivalent to taking 773,000 million cars off the road per year



Environmental Savings:

- ▶ Aluminum – 44,000 Tons Recycled
- ▶ Energy savings equivalent to powering nearly 88,000 houses for one year
- ▶ 95% energy savings on the life cycle of the can
- ▶ Recycling one aluminum can saves enough energy to run a TV for 3 hours
- ▶ Enough aluminum is thrown away to rebuild the nation's commercial air fleet 4 times every year
- ▶ Greenhouse Gas Reduction equivalent to taking nearly 126,000 cars off the road per year

Environmental Savings:

- ▶ Plastics – 198,000 Tons Recycled
- ▶ If we recycled every plastic bottle we used, we would keep 2 million tons of plastic out of landfills
- ▶ Energy savings equivalent to powering 86,000 houses for one year
- ▶ We use enough plastic wrap to wrap all of Texas every year
- ▶ Greenhouse Gas reduction equivalent to taking 54,000 cars off the road per year





Stark-Tuscarawas-Wayne
Recycling District

<https://www.timetorecycle.org/>
