


A vertical strip on the left side of the slide shows a topographic map of a portion of Wooster, Ohio. It features contour lines, a road network, and a yellow line that likely represents a water feature or a specific engineering project boundary.

Development and Engineering in the City of Wooster

A decorative graphic element consisting of a horizontal grey bar with a white circle at its left end. From the circle, a white arrow points to the right, and a smaller white arrow points downwards and to the right.

Roger Kobilarcsik, P.E., City Engineer
Engineering Division Manager

Engineering & Development in the City of Wooster

- Planning and Managing Infrastructure and Development
- Respecting the Interests of the Development & Business Community
- Enforcing Engineering Standards & Regulations
- Working to Facilitate Economic Growth



Engineering Development Role

- Advise Planning Commission
- Review Development Plans
- Limit "Road Blocks"
- Assess City Infrastructure Capabilities
- Plan for Future Development
- Construct for Future Development
- Participate in Wooster Growth Corp.



A vertical strip on the left side of the slide shows a topographic map of a coastline, with white lines indicating roads or trails and green areas representing vegetation or parks.

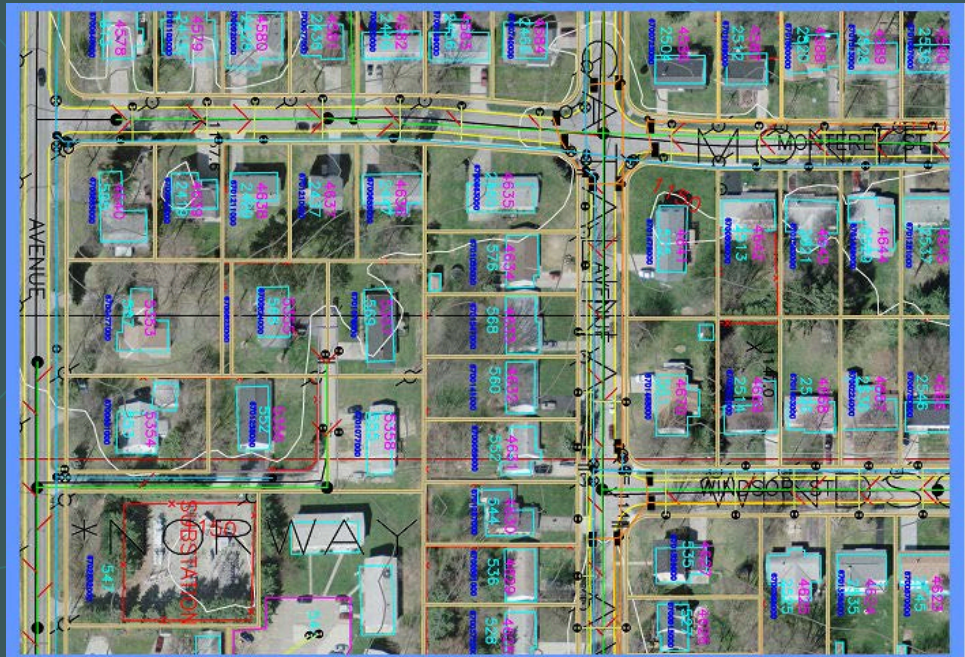
Engineering Division Mission & Goals

- Administer the City Infrastructure Strategic Plan
- Protect the public health, safety and welfare
- Manage existing City Infrastructure within City R/W
- Provide Guidance to developers, engineers and businesses relative to facilities development
- Provide engineering services for City projects at market competitive rates

G.I.S. Management

(Planning and Guidance)

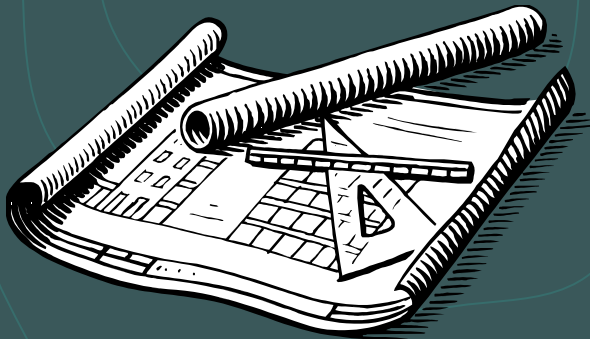
- Geographic Information System
- Utility System Mapping
- Aerial Mapping
- Parcel Maps
- Street Maps



Engineering Division Authority & Responsibility

■ City of Wooster Codified Ordinances

- Traffic Code
- Planning & Zoning Code
- Streets & Utilities Code
- Fire Code



■ State & Federal Regulations

- EPA
 - Storm Water Runoff
 - Water & Sewer
- ODOT
 - Roads
 - Bridges
- Ohio Revised Code
 - Construction Contracts

Infrastructure Planning & Development — (Responsibility)

● Municipal Public Works Projects

- Roadways — Bridges
- Water — Sewer
- Storm Water Management

● Services Provided

- Surveying — Mapping
- Design
- Contract Administration
- Inspection



Utility Management & Permitting

(Authority & Responsibility)

- Development Permits
- Work Along Road – R/W Permits
- Yard Pipe Permits
- Water Service Permits
- Sanitary Sewer Permit



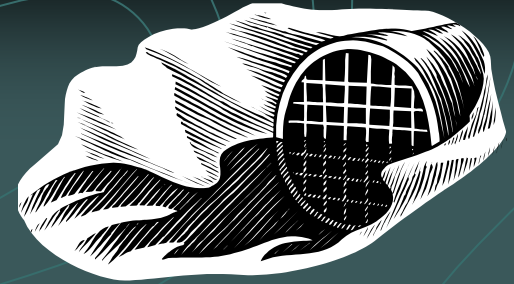
Engineering Standards & Enforcement

- Engineering Construction Standards
- Site Development & Improvement Manual
- Ten States Standards
- ODOT Construction & Material Specifications



Storm Water Management

(Standards & Enforcement)



- City Ordinance 925 – Storm Water Management & Enforcement
- Site Development Manual Implementation
- EPA Storm Water Discharge Compliance
- Ohio Drainage Law Interpretation



Traffic Control

(Standards & Enforcement)

- Traffic Studies
- Traffic Counts
- Traffic Control Map
- Traffic Commission

